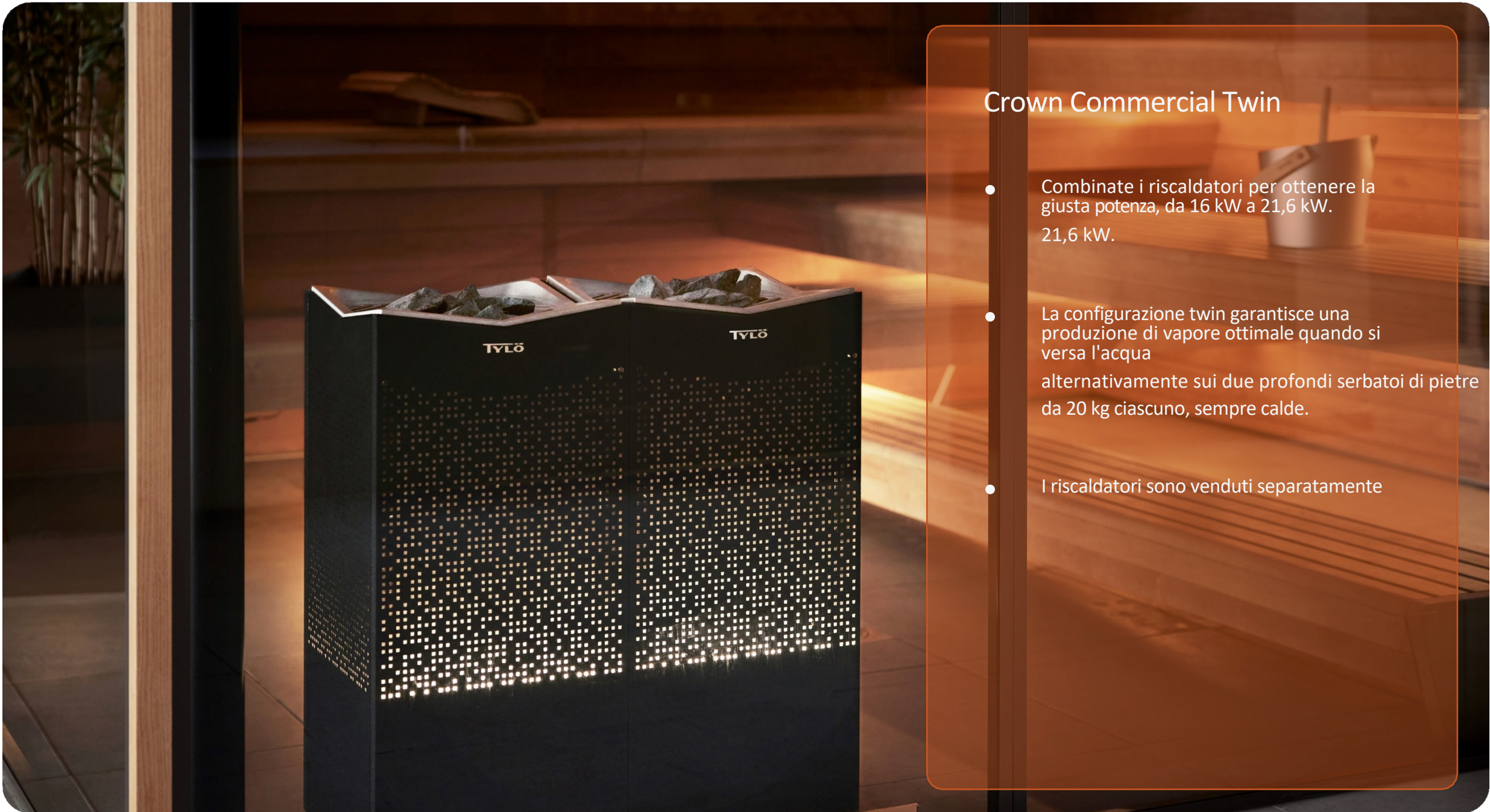


# Crown Commercial Twin





## Crown Commercial Twin

- Combinare i riscaldatori per ottenere la giusta potenza, da 16 kW a 21,6 kW. 21,6 kW.
- La configurazione twin garantisce una produzione di vapore ottimale quando si versa l'acqua alternativamente sui due profondi serbatoi di pietre da 20 kg ciascuno, sempre calde.
- I riscaldatori sono venduti separatamente



## Crown Commercial Twin 8+8 kW

Volume minimo: 15 m<sup>3</sup>

Volume massimo: 35 m<sup>3</sup>

## Crown Commercial Twin 8+10,8 kW

Volume minimo: 18 m<sup>3</sup>

Volume massimo: 40 m<sup>3</sup>

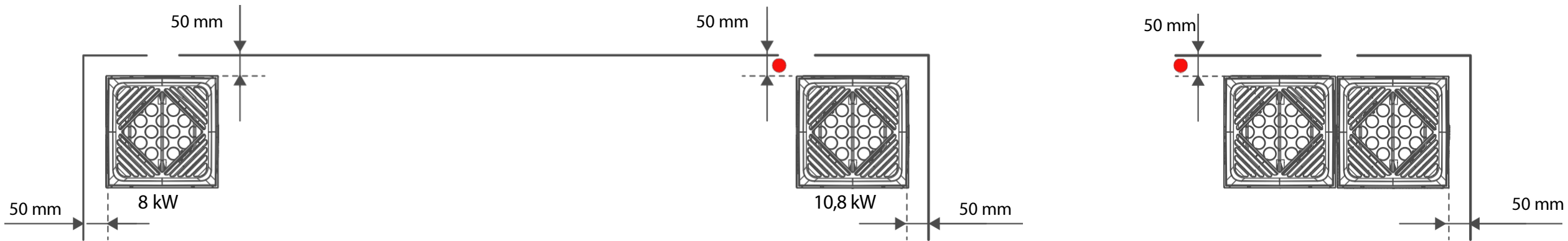
## Crown Commercial Twin 10,8+10,8 kW

Volume minimo: 22 m<sup>3</sup>

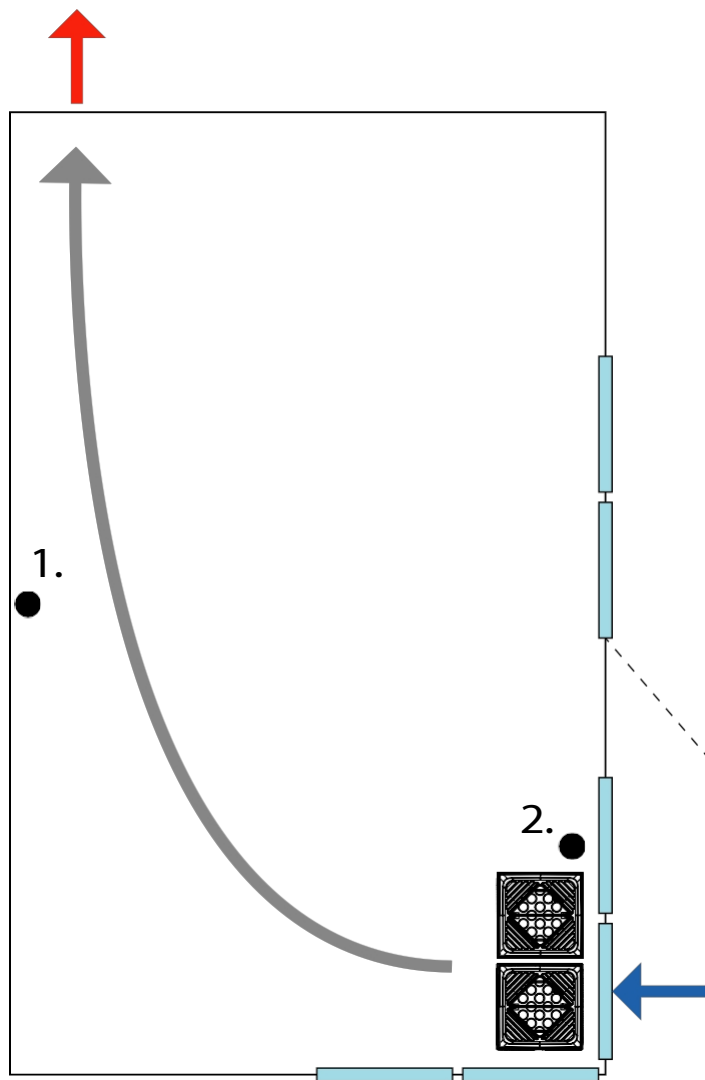
Volume massimo: 45 m<sup>3</sup>

Altezza minima del soffitto 2100 mm

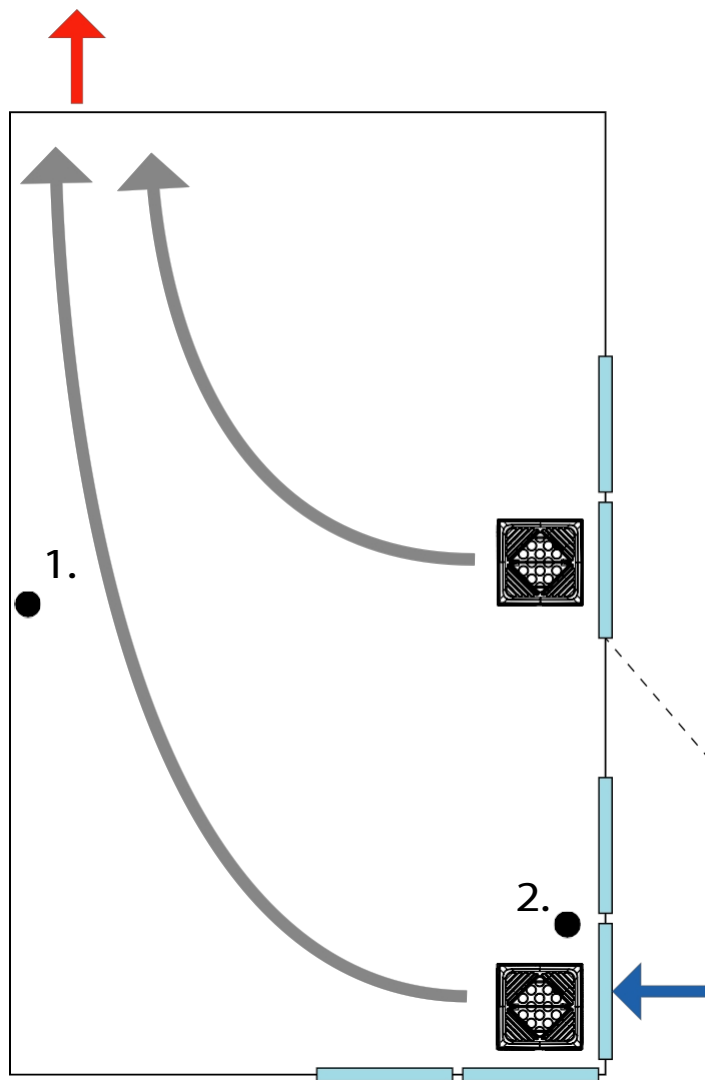
	Output:	Sauna Volume:	Min. Safety Distance:	Min. Ceiling Height:	Size:
<b>Crown Commercial 8</b>	8 kW	6-12 m <sup>3</sup>	50 mm	1900 mm	362x362x805 mm
<b>Crown Commercial 10</b>	10.8 kW	10-18 m <sup>3</sup>	50 mm	1900 mm	362x362x805 mm
<b>Crown Commercial Twin</b>	8+8 kW	15-35 m <sup>3</sup>	50 mm	2100 mm	724x362x805 mm
	8+10.8	18-40 m <sup>3</sup>	50 mm	2100 mm	724x362x805 mm
	10.8+10.8 kW	22-45 m <sup>3</sup>	50 mm	2100 mm	724x362x805 mm



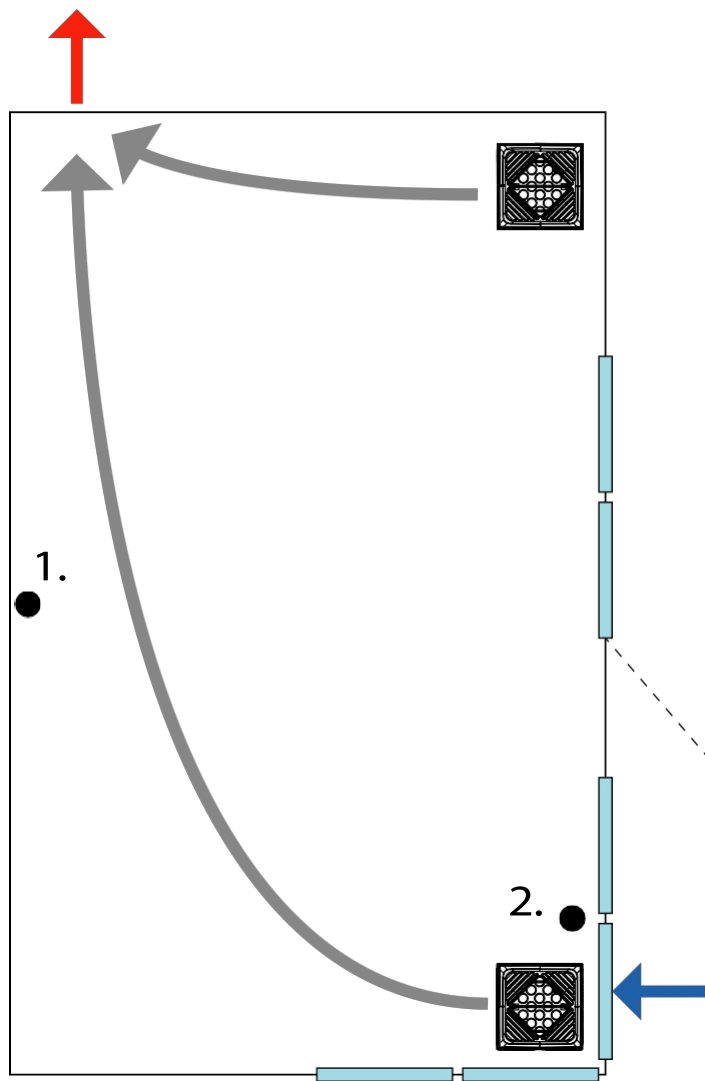
1. 104 gradi C
2. 110 gradi C



1. 92 gradi C
2. 110 gradi C



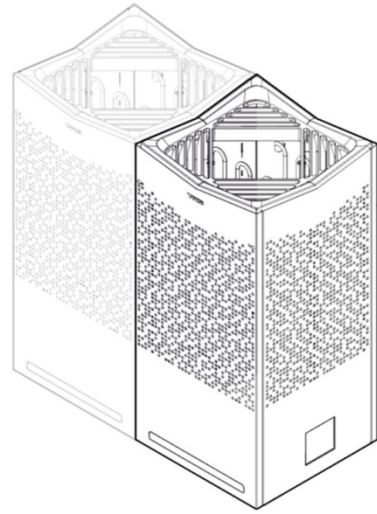
- 1. 89 gradi C
- 2. 110 gradi C



# CROWN COMMERCIAL

2025-10-27

**A**



SVENSKA  
**INSTALLATIONSANVISNING**

ENGLISH  
**INSTALLATION GUIDE**

DEUTSCH  
**INSTALLATIONSANLEITUNG**

FRANÇAIS  
**NOTICE D'INSTALLATION**

POLSKI  
**INSTRUKCJA INSTALACJI**

NEDERLANDS  
**INSTALLATIEHANDLEIDING**

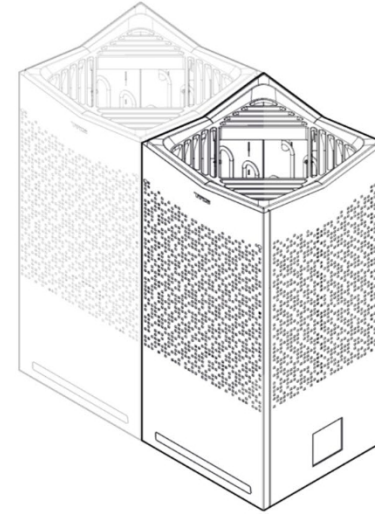
2900 5560

**TYLÖ**

# CROWN COMMERCIAL

2025-10-27

**B**



SVENSKA  
**BRUKSANVISNING**

ENGLISH  
**USER GUIDE**

DEUTSCH  
**GEBRAUCHSANWEISUNG**

FRANÇAIS  
**NOTICE D'UTILISATION**

POLSKI  
**INSTRUKCJA OBSŁUGI**

NEDERLANDS  
**GEBUIKERSHANDLEIDING**

2900 5562

**TYLÖ**

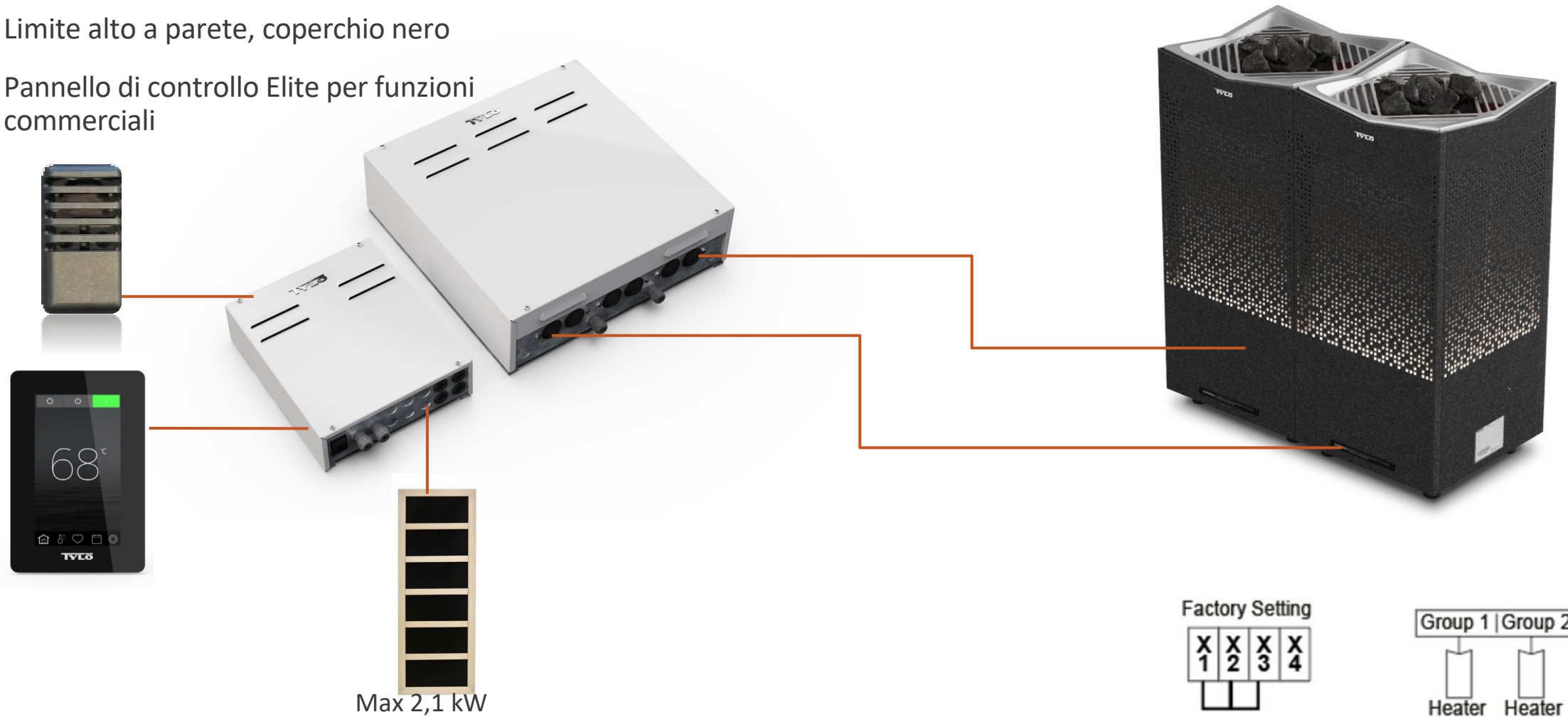
# Sistema Relay Box Pro

- Combina diverse fonti di calore (IR + Riscaldatori)
- Design modulare per adattarsi alle vostre esigenze
- Realizzato per applicazioni commerciali
- Compatibile con Tylarium (senza IR)



# Riscaldatori gemelli con RB Commercial Pro Concept

- Regolazione di potenza tutto/nulla
- Limite alto a parete, coperchio nero
- Pannello di controllo Elite per funzioni commerciali



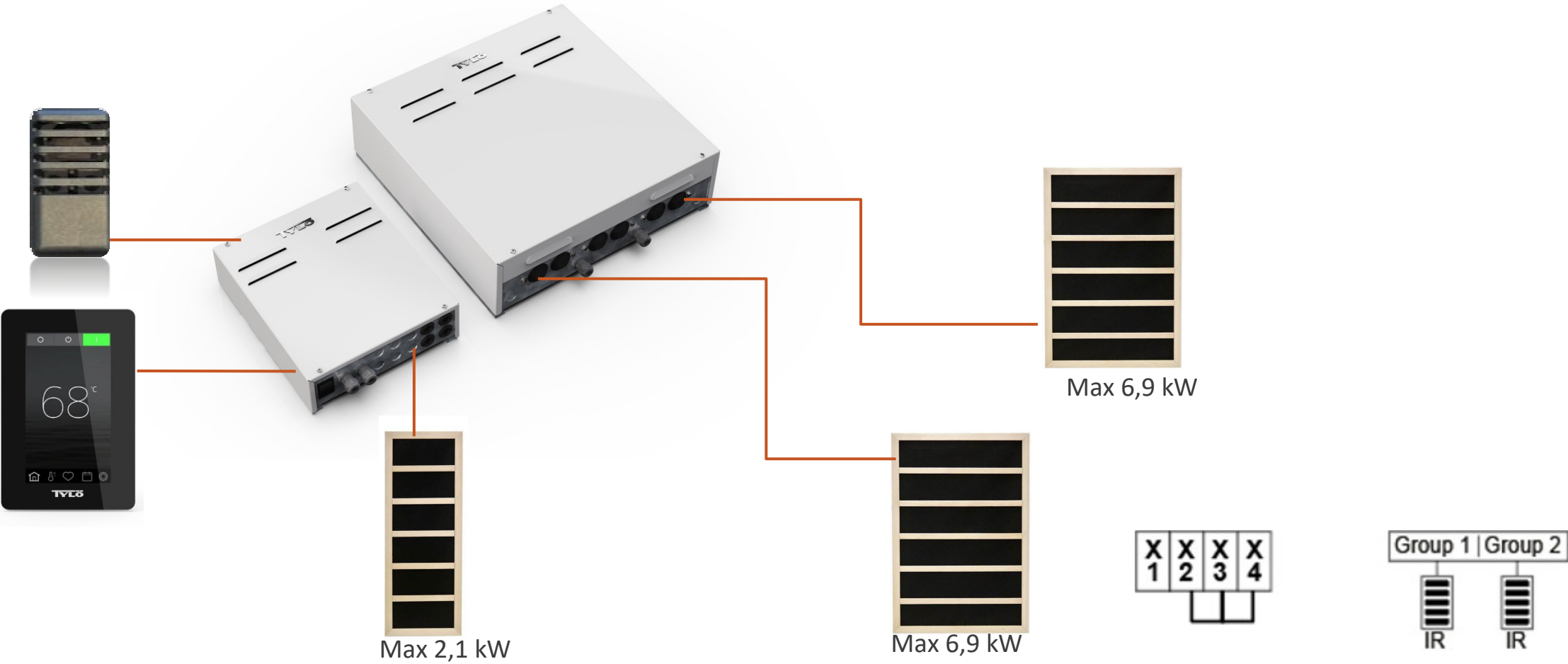
## Riscaldatore con IR

- Con l'aumento della domanda di pannelli IR
- Utilizzare un gruppo nella scatola dei contattori per gli IR e uno per un riscaldatore.



# Solo pannelli IR

- Per massimizzare la potenza IR, utilizzare entrambi i gruppi elettrici per IR.



# Controllo RB Pro

- 2,1 kW IR
- 2 Uscita ausiliaria
- 1 Uscita luce



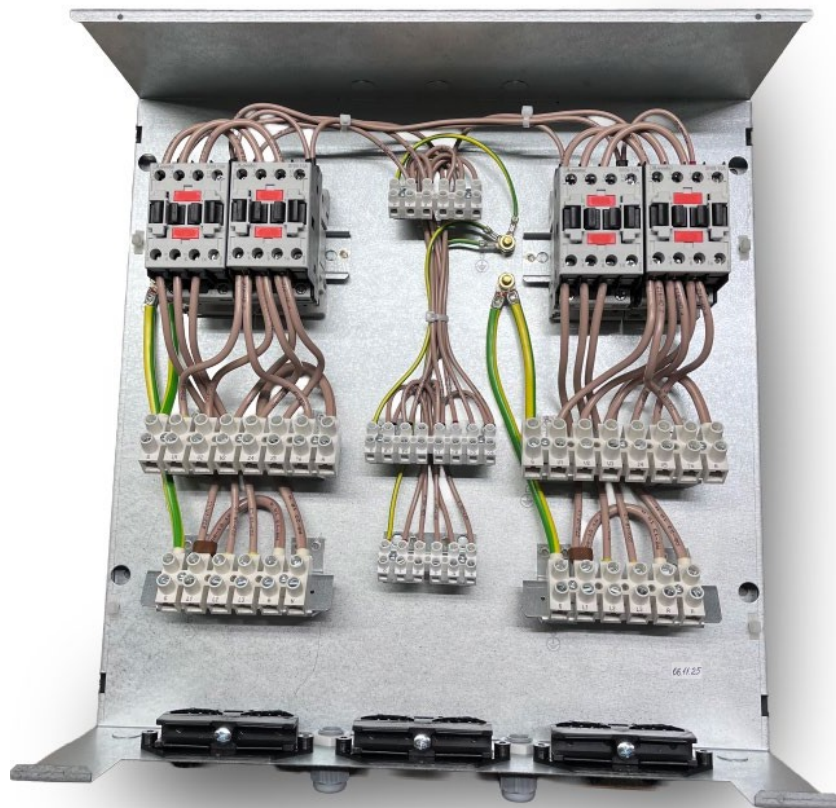
# RB Pro Power 25/45 Amp

- 2 gruppi elettrici separati
- Scegliere la configurazione (riscaldatore/IR/combinato)
- Uscita luce per i riscaldatori
- Aggiungere una scatola supplementare se necessario (Fase III)

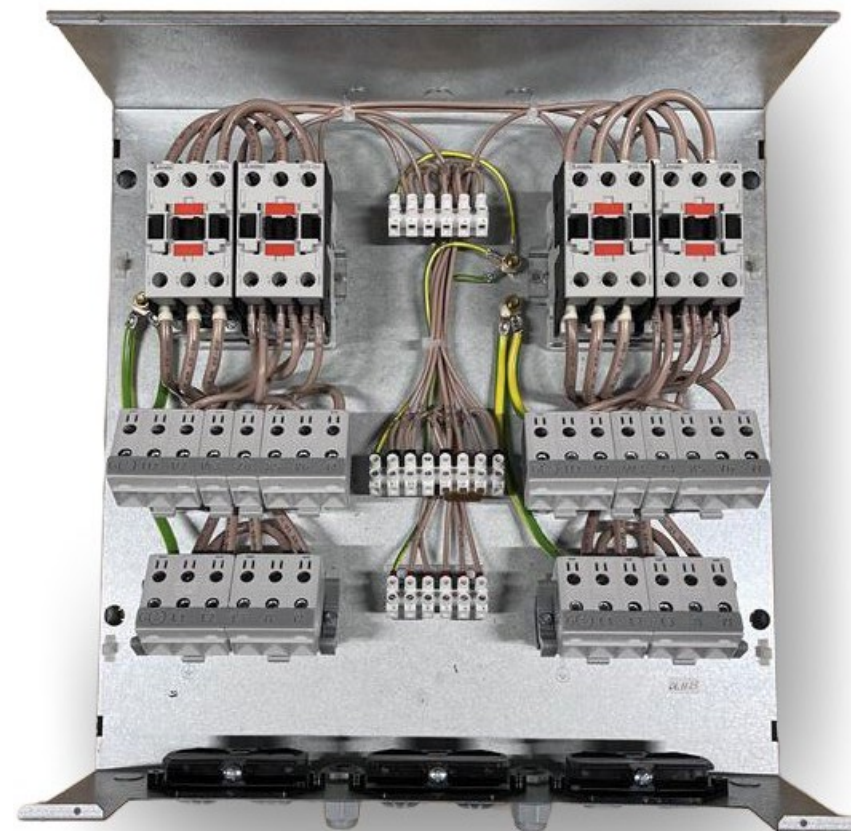
Max output per group	RB Pro Power 25 Amp Article nr. 7101 6110	RB Pro Power 45 Amp Article nr. 7101 6112
Electrical Heaters	max 15 kW @ 400-415V 3- max 8 kW @ 200-230V 3- max 8 kW @ 200-230V ~	max 15 kW @ 400-415V 3- max 15 kW @ 200-230V 3- max 8 kW @ 200-230V ~
IR-Panels	max 6,9 kW @ 400-415V 3N- max 3,9 kW @ 200-230V 3-	max 6,9 kW @ 400-415V 3N- max 3,9 kW @ 200-230V 3-



RB Pro Control



RB Pro Power 25



RB Pro Power 45

# Crown Commercial & RB Pro

Technical Information



**TYLÖ**

## Crown Commercial

Crown heater is now available in a power-commercial version, designed to meet high demands of professional sauna environments. Crown Commercial retains the crown-shaped grill and atmospheric lighting, combining elegant design with a build tailored for intensive, commercial

Installation is smooth and efficient. Everything is accessible from one side, saving time and simplifying both setup and maintenance. A deep stone compartment holds up to 20 kg of stones, ensuring even and long-lasting heat. Optimized airflow guarantees effective heat distribution throughout the sauna. The integrated lighting adds a warm, relaxing ambience – perfect for creating a premium sauna experience.



6-12 m<sup>3</sup>  
nr. 6100 2400  
nr. 6100 2410 (200 V)

10.8 kW (10-18 m<sup>3</sup>)  
Article nr. 6100 2402  
Article nr. 6100 2412 (200 V)

RB Commercial Lite

The unit is controlled by the Elite control panel and Commercial Lite relay box. (Not included)

**TYLÖ**

## Crown Commercial Twin

If you are in need for extra power you can double up two Crown Commercial heaters in a twin configuration. Mix and match the heaters for the right power output, from 16 kW to 21.6 kW. The twin setup gives an optimal steam production when pouring water alternately on the two deep stone reservoirs with 20 kg each, always hot stones. These units are sold one by one, see previous page.



8 + 8 kW (15-35 m<sup>3</sup>)      8 + 10.8 kW (18-40 m<sup>3</sup>)      10.8 + 10.8 kW (22-45 m<sup>3</sup>)



These units are controlled by the Elite control panel, RB Pro Control and RB Pro Power. (Not included)

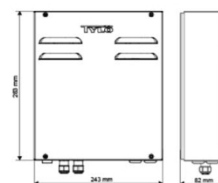
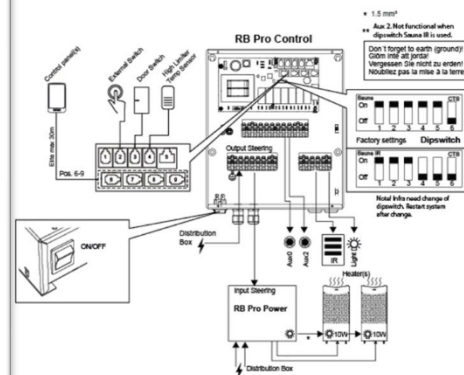
**TYLÖ**

## Pro Control

Article nr. 7101 6100

- Steering box to control the contactor box RB Pro Power
- 2 Aux Outputs (use for other functions such as extra light, water, sound)
  - 1 Light output
  - 1 IR-output (max 2100 W)

Input: 200-240V – 10A  
Placement: Dry and max 35 degrees C.  
Needs to be complemented with Control Panel Elite and RB Pro Power (to be able to use more than 2100 W IR output)



**TYLÖ**

## TWIN CROWN COMMERCIAL

Powerful sauna solution for larger spaces

Twin Crown Commercial is developed for larger commercial sauna rooms or when extra high output is needed. With two synchronised Crown Commercial heaters in a Twin configuration, it delivers up to 21.6 kW of power and even steam distribution via two separate stone compartments.



- Two separate stone compartments (2x20 kg)
- ThermoSafe™ surface – cool to the touch
- Robust design for continuous commercial use
- Integrated LED lighting for ambient illumination

**Dimensions** (WxDxH): 724 x 362 x 805 mm  
**Weight:** 52 kg + 40 kg of stones  
**Safety distance** (sides): 50 mm  
**Minimum ceiling height:** 2100 mm

Model	Output (kW)	Sauna volume	Article no
Twin Crown Commercial 16	8 + 8 = 16 kW	15–35 m <sup>3</sup>	61002400 x2
Twin Crown Commercial 18,8	8 + 10,8 = 18,8 kW	18–40 m <sup>3</sup>	61002400 & 61002402
Twin Crown Commercial 21,6	10,8 + 10,8 = 21,6 kW	22–45 m <sup>3</sup>	61002402 x2

Please note that heavy materials such as tiles or glass will increase the required heating capacity.

The units are controlled using the Elite control panel (art. 72005040), relay box Pro Control and relay box Pro Power. See article numbers on page 3.

**TYLÖ**

2 Tylö Sauna360 AB | Sauna Steam Infrared | +46 (0)35-299 00 00 | tylo.com

## RELAY BOX PRO

Flexible control for heater and IR installations

Relay box Pro Control and relay box Pro Power 25/45 are developed for sauna environments where multiple heat sources need to be managed. The system handles both heaters and IR panels in two separate groups and is especially well-suited for setups such as Twin Crown Commercial and hybrid solutions with IR panels.

### Relay box Pro Control

**Art. 71016100**

Control module used together with relay box Pro Power.

Required for operating Pro Power 25 or 45 Amp  
 Connects to the Elite control panel  
 Direct control of up to 2100 W IR panels (Harmony IR)  
 2 aux outputs  
 1 output for lighting  
 Power supply: 200–240 V – 10 A



### Relay box Pro Power 25 Amp

**Art. 71016110**

Contactor box for two separate groups of heaters and/or IR panels.



### Relay box Pro Power 25 Amp

**Art. 71016112**

Larger version of the contactor box, supports higher output.

[No Title]

### Capacity – Relay box Pro Power 25 & 45 Amp

Application	Relay box Pro Power 25 Amp	Relay box Pro Power 45 Amp
For heater (per group)	Max 15 kW vid 400–415 V 3- Max 8 kW vid 200–230 V 3- Max 8 kW vid 200–230 V-	Max 15 kW vid 400–415 V 3- Max 15 kW vid 200–230 V 3- Max 8 kW vid 200–230 V-
For IR panels (per group)	Max 6,9 kW vid 400–415 V 3N- Max 3,9 kW vid 200–230 V-	Max 6,9 kW vid 400–415 V 3N- Max 3,9 kW vid 200–230 V-

**TYLÖ**

3 Tylö Sauna360 AB | Sauna Steam Infrared | +46 (0)35-299 00 00 | tylo.com

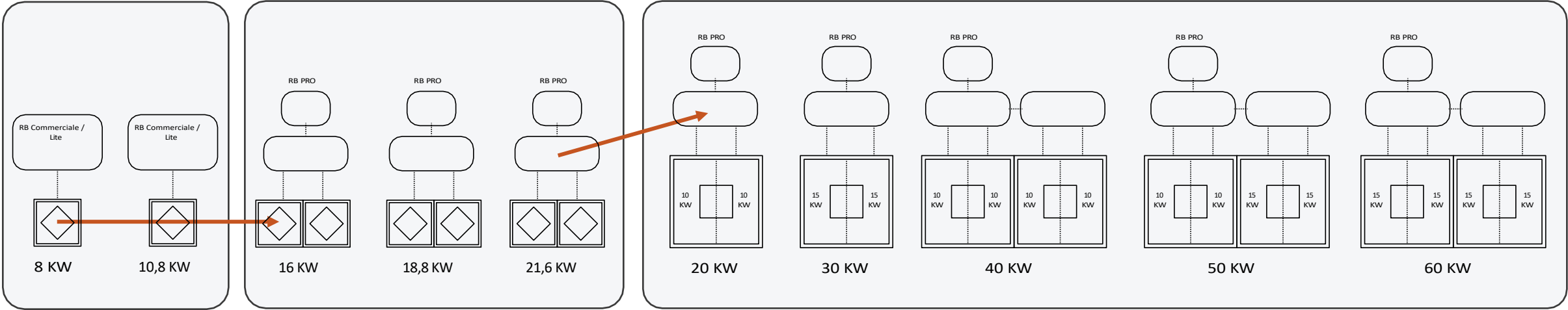
I prossimi passi...



# La gamma commerciale Crown

Utilizzare gli stessi riscaldatori nella Fase I e II

Utilizzo dello stesso nuovo sistema di controllo nella Fase II e III



Fase I

Fase II

Fase III

Avviata

Oggi

2026?

